

## Overview

**WallMaster** is a utility to help you configuring and programming your desktop wallpaper easily. It also has some cool [features](#) that will make you a master of your own desktop wallpaper.

WallMaster is released as [POSTCARDWARE](#) 😊

You can browse this help file by pressing the [<<] or [>>] buttons on the help toolbar. To see help topics, press [Contents], or press [Index] to see help index.

See also: [Quick Start](#)

# Features

## Features Summary

- User friendly interface with context-sensitive help.
- Allow you to create [collections](#) of your favorite wallpapers and customize it as you like.
- Beside bitmap file, you can use JPG, GIF, PNG, PCX, TGA, PCD and ICO as your desktop wallpaper.
- Support color reduction with image dithering to keep the quality of the source image.
- You can program the wallpaper to change automatically after a predetermined period of time (e.g. every 30 minutes).
- You may also use WallMaster to [change desktop wallpaper every Windows startup](#).
- You can set the position of the wallpaper (tile, center, fit to screen, auto fit, or custom).
- Use system tray to ease you control the wallpaper anytime.
- Ability to hide Windows desktop icons.
- Preview window to preview your favorite wallpapers. No need to use huge graphics viewer software just to view it.
- Automatic detection of bad graphics files (empty/bad data, incomplete image, etc).
- Gamma correction support to fix dark images.

If you want any features to be added or removed, please don't hesitate to send your ideas to [me](#).

## Do I need to pay for WallMaster?

Well, this is a very interesting question...

**WallMaster** is *postcardware*. You are allowed to install WallMaster and to try it out for a short while (a week or two), but if you want to continue using it you must "pay" by sending the author a *nice postcard* to the address shown [below](#).

The postcard should be from your home town so I can see how far WallMaster spreads. If your town is too small to have postcards, send one from your province, state or country. Electronic postcards and the like are not accepted. You have to send a real one through snail-mail. I collect them. Postcards also have pretty pictures on them. An oversized business-card is not a postcard.

After your postcard has arrived, you are allowed to use WallMaster for as long and as much as you want, without any other cost. You also have the right then to update your copy of WallMaster when new versions come out. If you mention your email address on the postcard, I will send you a message when I receive your postcard.

Please note that this "payment" is strictly personal. Everyone who uses WallMaster has to register, even if someone else installed it on your computer or if you found it on some CD-ROM you bought (you paid for the CD, not for WallMaster.) Even if you use WallMaster (but you'd rather not) because your boss wants you to, you have to send a postcard.

Even if WallMaster seems to be a simple application, writing it was not an easy task. So if you like it, send me a nice postcard. If everyone would say "thank you" when someone else did or said something nice, this world would be a much better place. Your postcard will also encourage me to enhance and develop WallMaster much better.

If you feel that WallMaster is definitively worth some money, feel free to put your postcard in an envelope and include a few dollars (or your local currency).

Send your postcard to this address:

**Edy Budiman**  
**JL. Anggrek no. 33 B**  
**Jakarta 10450**  
**INDONESIA**

## Version History

### *Version 1.2e - 04 Mar 1998*

- Added gamma correction support.
- Few minor bug fixes.

### *Version 1.2d - 03 Mar 1998 (immediately replaced by version 1.2e)*

- Added feature to remove bad items automatically.

### *Version 1.2c - 28 Feb 1998*

- Fixed major bug caused by the threaded timer (thanks to Mark for this bug report).
- Support drag and drop any image file to the preview window.
- Added option to automatically remove invalid images from the showlist on runtime.
- Few enhancements.

### *Version 1.2b*

- Added option: "Remove bad graphics" to remove bad graphics file (file no longer exists, bad data, etc) from showlist. (thanks to Mark Holden...)

### *Version 1.2a - 23 Feb 1998*

- New wallpaper position: **auto fit**.
- New feature: change wallpaper position through the popup menu.
- New feature: ability to play sound file (WAV) when wallpaper changes.

### *Version 1.1a - 18 Feb 1998*

- Added keyboard shortcuts to speed up configuring wallpapers.
- The default wallpaper position has been changed to **center**, not **tile** anymore.
- Few enhancements

### *Version 1.0a - 12 Feb 1998*

- First public release and still not fully tested.

### **WallMaster Showlist File**

Save collection of your favorite wallpapers in WallMaster showlist file. The wallmaster showlist file is saved in a text file with file extension WAL. It allows you to customize it by editing the file with a text editor. Be sure to read the instructions pasted in the file before changing the file.

### **Images supported by WallMaster**

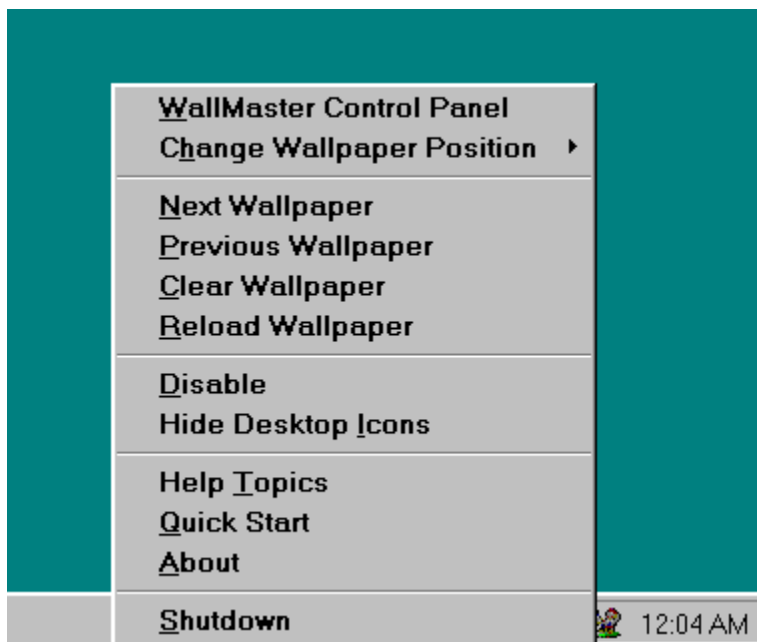
Currently, beside bitmap (BMP), WallMaster supports JPG, GIF, PNG, PCX, TGA, PCD, and ICO. You can use these image files as desktop wallpaper. WallMaster will convert these images to bitmap before using it as desktop wallpaper. The converted file will be saved in your Windows directory as a bitmap file named "WallMaster Wallpaper".

## Quick Start

Using WallMaster is very easy. After you run WallMaster, you should see the WallMaster icon in Windows system tray (Taskbar Notification Area).



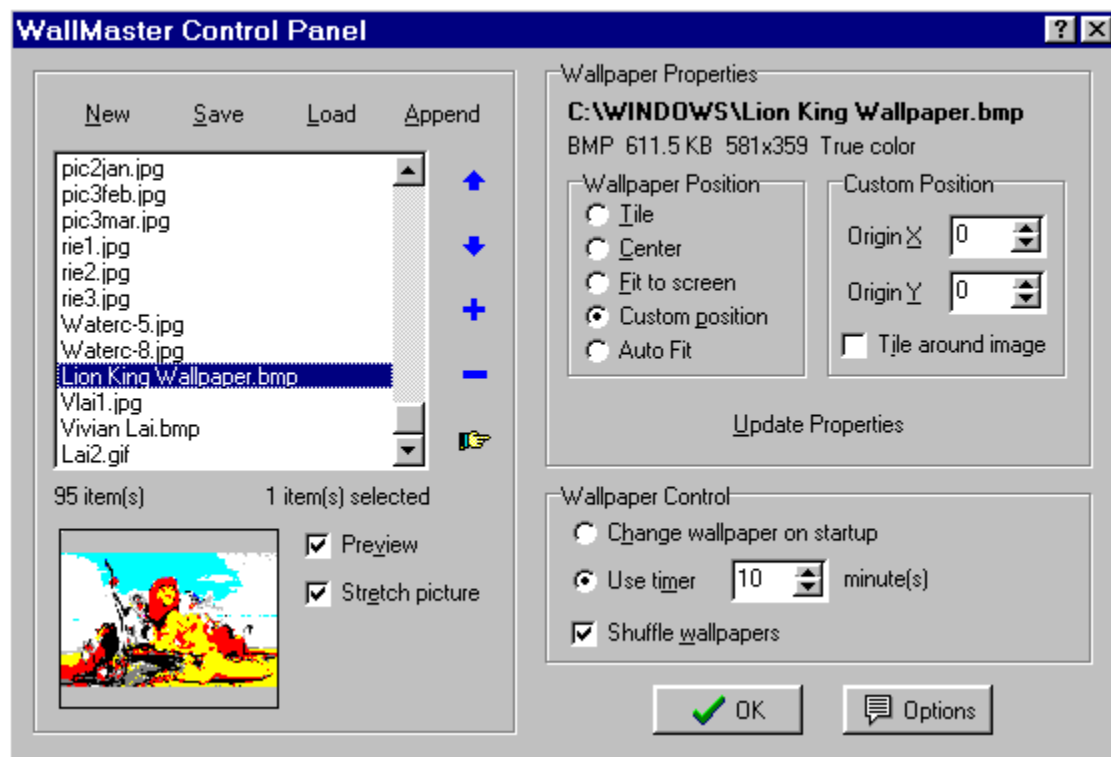
You can click the icon to display a popup menu like this one:



<b>WallMaster Control Panel</b>	show WallMaster Control Panel to change WallMaster settings
<b>Change Wallpaper Position</b>	change current wallpaper position
<b>Next Wallpaper</b>	change desktop wallpaper to the next wallpaper in showlist (ignored if the <b>Shuffle wallpapers</b> option is checked)
<b>Previous Wallpaper</b>	change desktop wallpaper to the previous wallpaper in showlist (ignored if the <b>Shuffle wallpapers</b> option is checked)
<b>Clear Wallpaper</b>	clear desktop wallpaper
<b>Reload Wallpaper</b>	reload desktop wallpaper
<b>Enable/Disable</b>	enable or disable WallMaster
<b>Show/Hide Desktop Icons</b>	show or hide desktop icons

<b>Help Topics</b>	show help topics
<b>Quick Start</b>	show this topic
<b>About</b>	about this software
<b>Shutdown</b>	terminate WallMaster

To make WallMaster working as you want, you need to configure it by clicking **WallMaster Control Panel** on the popup menu to display WallMaster Control Panel. Click on the picture to see more help.





## How to change desktop wallpaper every Windows startup?

If you wish to change desktop wallpaper every Windows startup, follow these steps:

1. Add the wallpaper files in the showlist and set their properties properly.
2. Mark the **Change wallpaper on startup** checkbox.
3. Mark also the **Auto shutdown** checkbox (optional).
4. Put WallMaster in the **StartUp** folder.
5. Shutdown WallMaster.
6. Try to restart Windows and see whether it works or not.

If it didn't work as you and I expected, please check the steps again carefully to find the problem.

**OK button**

Press this button to close the window. The highlighted wallpaper in the showlist will be the next wallpaper displayed.

**Options button**

Press this button to change other WallMaster configurations.

## Uninstall WallMaster

Uninstallation is very easy because I wrote my own Setup program. Although I can't imagine the reason that cause you want to uninstall this such nice software, you can uninstall it by running the Setup program again.

[Click here to run Setup program](#)

This is WallMaster icon. You can click it to display popup menu. A double click will display WallMaster Control Panel.

Check this option if you want WallMaster automatically remove invalid images (empty images, incomplete images, bad image data, etc) from the showlist on runtime. If this option is not checked, WallMaster will display an error message box when trying to use the invalid image as desktop wallpaper. **I suggest you to turn on this option to avoid any weird problems.**

### **Wallpaper Resolution**

This option determines the save resolution when you use non bitmap image (JPG, GIF, PCX, etc) as desktop wallpaper. The default is automatic, means that WallMaster will check the system resolution and choose appropriate resolution. WallMaster will use color reduction with dithering if needed, to keep the good quality of source image.


**New button**

Press this button to clear all items in showlist and create a new one.



**Beep when wallpaper changes**

Mark this option if you want a beep sound when WallMaster is about to change the desktop wallpaper.

You may also enter a sound file (WAV) to be used as beep sound. Click the  button to play the sound.

**Allow duplicate items in showlist**

Check this option if you want to ignore duplicate items in showlist. However, if you have large collection of wallpaper files in many directories, you may prefer to uncheck this option to prevent duplicate items.

**Default directory for showlist file**

Your showlist files will be saved in this directory. This option is useful to ease you managing your showlist files in a directory. Enter a directory name, e.g. D:\Wallpapers. If the directory doesn't exist, WallMaster can create it for you automatically.

**Save button**

Press this button to save the showlist to a file.

See also: [WallMaster Showlist File](#)

**Load button**

Press this button to load the wallpaper showlist from a file.

See also: [WallMaster Showlist File](#)

**Append button**

Press this button to append the wallpaper showlist from a file.

See also: [WallMaster Showlist File](#)

**Update Properties**

Press this button to update all properties for all selected items in the showlist.

Move the selected items up



Move the selected items down

### **Add Wallpapers**

Select the files you want to add to the showlist in the dialog. You can use any images [supported](#) by WallMaster as desktop wallpaper.

Remove selected wallpapers from showlist.

Press this button to display [showlist popup menu](#).

### Wallpaper Showlist

This is where you put all your favorite wallpapers. The wallpapers will be displayed in sequence unless the **Shuffle wallpapers** option is checked. *The highlighted item in the showlist is the next wallpaper that will be displayed.*

### Showlist Status

This shows the number of items in the showlist and total selected items.

## Showlist Popup Menu

Set As <u>W</u> allpaper	Ctrl+W
Select <u>A</u> ll	Ctrl+A
<u>I</u> nvert Selection	Ctrl+I
<u>S</u> elect...	Ctrl+S
<b>S</b> ort Items	
<b>S</b> how Full <u>P</u> ath	
<b>R</b> emove <u>D</u> uplicate Items	
<b>R</b> emove Bad Graphics	

<b>Set As Wallpaper</b>	set the highlighted item in showlist as desktop wallpaper
<b>Select All</b>	select all items in the showlist
<b>Invert Selection</b>	invert selection in the showlist
<b>Select...</b>	select items with filters
<b>Sort Items</b>	option to sort items in the showlist (no undo)
<b>Show Full Path</b>	display file with its full path in the showlist
<b>Remove Duplicate Items</b>	option to remove all duplicate items in the showlist
<b>Remove Bad Graphics</b>	scan all graphics and remove bad graphics file from showlist

Here, you can preview the highlighted wallpaper file in the showlist. No need to use an external graphics viewer software to view it.



Check or uncheck this checkbox to show or hide the preview window.

Mark this checkbox to fit the previewed wallpaper picture to the preview window.

### **Wallpaper Properties**

You can see the wallpaper file name and image info (type, size, resolution and compression method) here. You may also change the wallpaper position on the screen.

### Wallpaper Position

Select the wallpaper position you like for current highlighted wallpapers in the showlist. There are five positions you can choose: **tile**, **center**, **fit to screen**, **custom** or **auto fit**. **Tile** tiles the wallpaper on the screen. **Center** centers the wallpaper. **Fit to screen** stretches the wallpaper to the screen. In **custom position**, you can put the wallpaper at any position on the screen. And, **auto fit** fits the wallpaper to screen and maintains image size ratio.

*NOTE: If you select multiple wallpapers in the showlist and want to update all their properties at once, don't forget to press the **Update Properties** button.*

Enter the wallpaper left and top positions relative to the screen upper left corner. The Origin X and Origin Y value will only be used if you set the wallpaper position to **Custom**. Mark the **Tile around image** checkbox if you want to tile the image around. If you set the Origin X / Origin Y value to 0, then the wallpaper will be centered horizontally / vertically.

### **Change wallpaper on startup**

Mark this option if you want to change the desktop wallpaper every time WallMaster starts. See also: [How to change desktop wallpaper every Windows startup?](#)

### **Auto Shutdown**

Mark this option to terminate WallMaster automatically after changing wallpaper. The default delay time for shutdown is about 20-30 seconds.

### Use Timer

The main feature of WallMaster is the ability to use timer to change desktop wallpaper after a specified period of time. Sometimes, I get bored with my wallpaper and have to change it manually. With WallMaster, I just need to load all my favorite wallpapers to the showlist and set the timer to a period of time (e.g. 30 minutes). After that every 30 minutes (*approximately*), I can see the desktop wallpaper changes automatically and I don't need to stop my work just to change it manually.



**Shuffle wallpapers**

If this option is checked, the wallpapers in the showlist will be shuffled and displayed randomly.

# License Agreement

WallMaster  
Copyright © 1998 by Edy B.  
All rights reserved.

You should carefully read the following terms and conditions before using this software. Unless you have a different license agreement signed by the author, your use of this software indicates your acceptance of this license agreement and warranty.

## Postcardware

Please read [this topic](#).

## Distribution

Provided that you verify that you are distributing the software, you are hereby licensed to make as many copies of this software and documentation as you wish; give exact copies of the original version to anyone; and distribute it and documentation in its unmodified form via electronic means. There is no charge for any of the above.

You are specifically prohibited from charging, or requesting donations, for any such copies, however made; and from distributing the software and/or documentation with other products (commercial or otherwise) without prior written permission.

If you want to put this software on a freeware/shareware CD-ROM or other compilation, please contact me before doing so, to be sure that you are not including old or incomplete stuff in the compilation. I would also appreciate it if I'd get a free copy of the CD-ROM.

**This software is provided 'as-is', without any express or implied warranty. In no event will the author be held liable for any damages arising from the use of this software.**

**This software has been written with great care but I do not warrant that the software is error free.**

**You may not attempt to reverse compile, modify, translate or disassemble the software in whole or in part.**

## Known Problems

Except the timer inaccuracy problem, I still don't find any serious problems or bugs. If you encounter any problem or bugs in this software, please inform [me](#). I will do my best to fix it in the next version asap.

## About the author

See also: [My other software](#)

Hi! My name is Edy Budiman. I live in Jakarta, Indonesia, a tropical country in South East Asia. I am 21 years old when writing WallMaster for the first time. I am a fourth year Information Science student and will be graduated very soon. I also work as a part-time senior programmer for a property marketing agent. My main hobby is writing useful software to make my life and others better and happier. I have been learning programming for seven years. WallMaster has been entirely created using Borland Delphi 3. Well, Delphi is my favorite environment and I am really interested on any Delphi related stuff you may have and wanna share with me.

I am expecting your comment and suggestion about this software, and also feel free to mail me if you find any bugs or problems.

You can contact me by e-mail at:

[edy\\_bd@yahoo.com](mailto:edy_bd@yahoo.com)

or

[edy@binus.ac.id](mailto:edy@binus.ac.id) (only if the first failed)

Visit my web site (Tropical Wares) to download the latest version at <http://come.to/twrs>

My postal address:

**Edy Budiman**  
**JL. Anggrek no. 33 B**  
**Jakarta 10450**  
**INDONESIA**

## My other software

If you like WallMaster, I encourage you to try my other software named Multimedia Manager. You will love it, too...

Multimedia Manager is an all in one multimedia software that lets you view images, play audio/video clips, and manage files easily. It supports BMP, JPG, GIF, animated GIF, PNG, TIF, TGA, PCD, PCX, ICO, MID, WAV, RMI, AVI, MOV, ANI, and other formats. You can stretch, tile, flip, rotate, resize or zoom image easily and you may print or scan image as well. Moreover, you can add filters and special effects to image (blur, mosaic, oil paint, spray, wave, page curl, half tone, sharpen, soften, gamma, engrave, and much more...).

Some other features are real drag'n drop support, clipboard support, powerful files management capability, good help file, list box feature, wallpaper support, batch image conversion, slide show feature, and other cool and unique features. This is a fully functional shareware (with cheap registration fee) with no nag screen and never expires.

[Click here to get more detail information](#)

[Or, click here to download it directly from my web site](#)

## Credits

Big thanks to people that maintain Delphi Super Pages, Torry's Delphi Pages and The Delphi Deli that really help me getting tons of freeware components, samples, and tips for Delphi.

If you need tips or valuable components for Delphi, don't hesitate to visit these sites first:

<http://sunsite.icm.edu.pl/delphi/> (Delphi Super Pages)

<http://carbohyd.siobc.ras.ru/torry/> (Torry's Delphi Pages)

<http://www.intermid.com/delphi/> (Delphi Deli)

<http://www.informant.com/undu/index.htm> (UNDU)

<http://www.user.xpoint.at/r.fellner/> (The Delphi Box)

Thank you to Mark Holden (twoheads@pacbell.net) who has been reporting bugs and suggestions to improve WallMaster.

*WallMaster was built using ImageLib Corporate Suite by Skyline Tools*



## Frequently Asked Questions

**Q: Do I need to install Microsoft Plus! or Font Smoother?**

A: Yes, if you want to use **fit to screen** position.

However, if you don't have one of them, I suggest you to use **auto fit** position instead because this position is better than **fit to screen** (can maintain image size ratio).

**Q: How does the timer in WallMaster work?**

A: WallMaster uses a timer to change the wallpaper every predetermined time period. The accuracy of the timer depends on many factors, so don't expect too much on this. Anyhow, it works well with me. The timer will reset when the wallpaper changes or whenever you access WallMaster Control Panel.

**Q: When do I need to disable WallMaster?**

A: You should disable WallMaster if you are going to run Norton Disk Doctor, ScanDisk, Speedisk, Disk Defragmenter, or other programs that check the disk write operation intensively because if these programs detect a disk write operation (occurs when WallMaster changes the desktop wallpaper), they will restart their operation. After you have finished with those programs, you may enable WallMaster again. However, this is just a suggestion and it won't cause serious problem if you forget to do so.

**Q: Why some compressed bitmap files cannot be previewed although these bitmaps are valid?**

A: Yes, some bitmap files especially compressed bitmaps cannot be displayed in the preview window. It doesn't mean you can't use compressed bitmap as desktop wallpaper. As long as the bitmap file is valid you can still use it as wallpaper. But you can't use 'Auto fit' position for these uncompressed bitmaps.

**Q: Should I disable WallMaster before playing Windows 95 games?**

A: Recently, I got a report from my brother that while he was playing FIFA 97, the display colors suddenly disappear and after few minutes the display returned normally. If you experience the same problem, you should disable WallMaster temporarily before playing the game to avoid any problem.

## Keyboard Shortcuts

These shortcuts can be used in the showlist window to help you configuring the wallpaper properties quickly without losing focus.

Ctrl + 1	set wallpaper position to <b>tile</b>
Ctrl + 2	set wallpaper position to <b>center</b>
Ctrl + 3	set wallpaper position to <b>fit to screen</b>
Ctrl + 4	set wallpaper position to <b>custom</b>
Ctrl + 5	set wallpaper position to <b>auto fit</b>
F6	update properties for all selected items in showlist
Insert	add wallpapers to showlist
Delete	remove selected wallpapers from showlist



Press the {button ?,} button and click on the panel to see more help.

### **Gamma correction support**

Since version 1.2e, I've added gamma correction feature to fix dark images (well, actually it's Mark request since he has lot of PNG images that needed to be gamma corrected before using them as wallpaper). You can configure the gamma value from 1.0 to 5.0.

